

A dark blue background featuring a faint, stylized image of the Arizona State Capitol building. The central focus is the large dome topped with the Arizona Pioneer statue, and below it, the ornate pediment with its decorative scrollwork. The text is overlaid on this background.

ARIZONA TOGETHER

STAY **HEALTHY** | RETURN **SMARTER** | RETURN **STRONGER**

THANK YOU

STAY HEALTHY | RETURN SMARTER | RETURN STRONGER

CALM & STEADY APPROACH

URGENT ACTION
TO PROTECT PUBLIC HEALTH

LATER TIMING AND LIGHTER
TOUCH IN PLACING RESTRICTIONS
ON THE ECONOMY

EMPHASIS ON MAKING
DATA-INFORMED DECISIONS

WHITE HOUSE PROPOSES STATE OR REGIONAL GATING CRITERIA

FLEXIBILITY FOR STATES TO TAILOR APPLICATION OF THESE CRITERIA TO LOCAL CIRCUMSTANCES

SYMPTOMS

Downward trajectory of influenza-like illnesses (ILI) reported within a 14-day period

AND

Downward trajectory of COVID-like syndromic cases reported within a 14-day period

CASES

Downward trajectory of documented cases within a 14-day period

OR

Downward trajectory of positive tests as a percent of total tests within a 14-day period

HOSPITALS

Treat all patients without crisis care.

AND

Robust testing program in place for at-risk healthcare workers, including emerging antibody testing

SYMPTOMS →

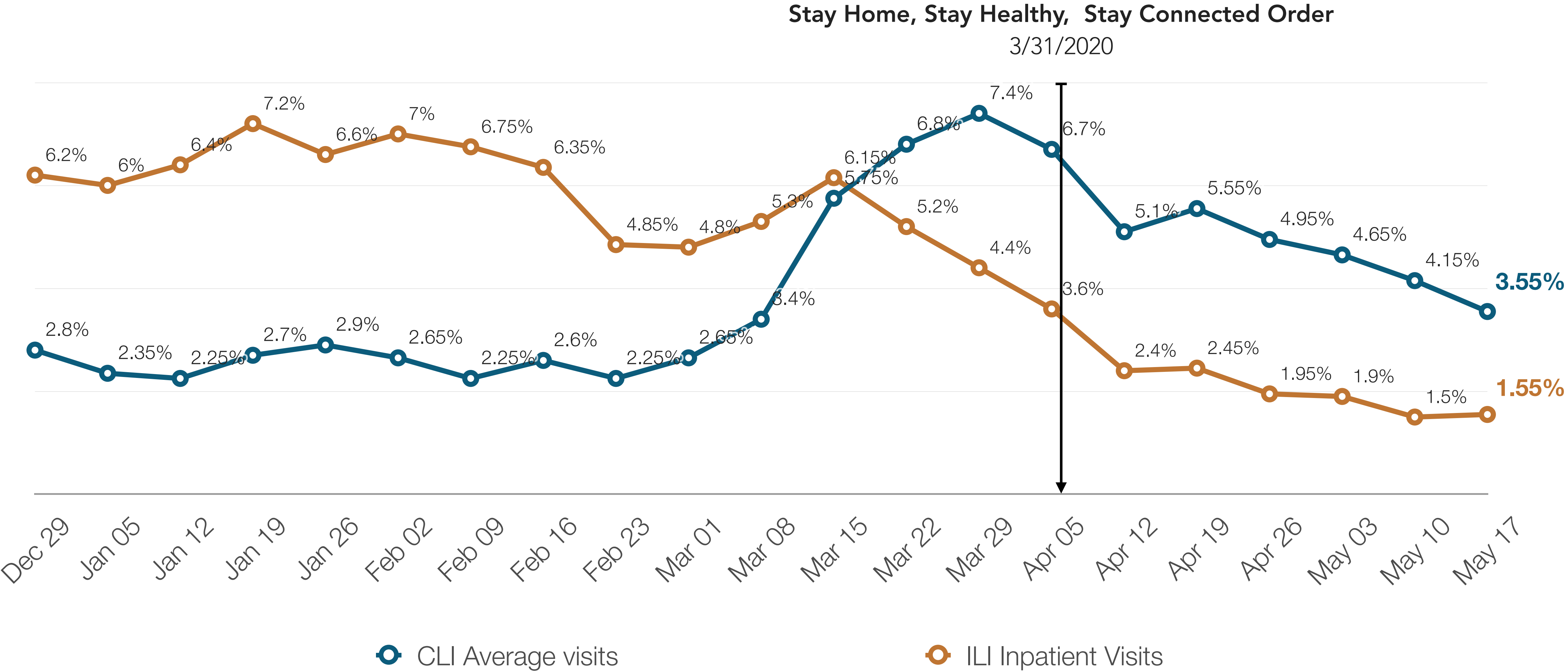
Downward trajectory of influenza-like illnesses (ILI) reported within a 14-day period

AND

Downward trajectory of COVID-like syndromic cases reported within a 14-day period

COVID-LIKE-ILLNESS (CLI) SURVEILLANCE

INFLUENZA-LIKE-ILLNESS (ILI) SURVEILLANCE



CASES →

Downward trajectory of documented cases within a 14-day period

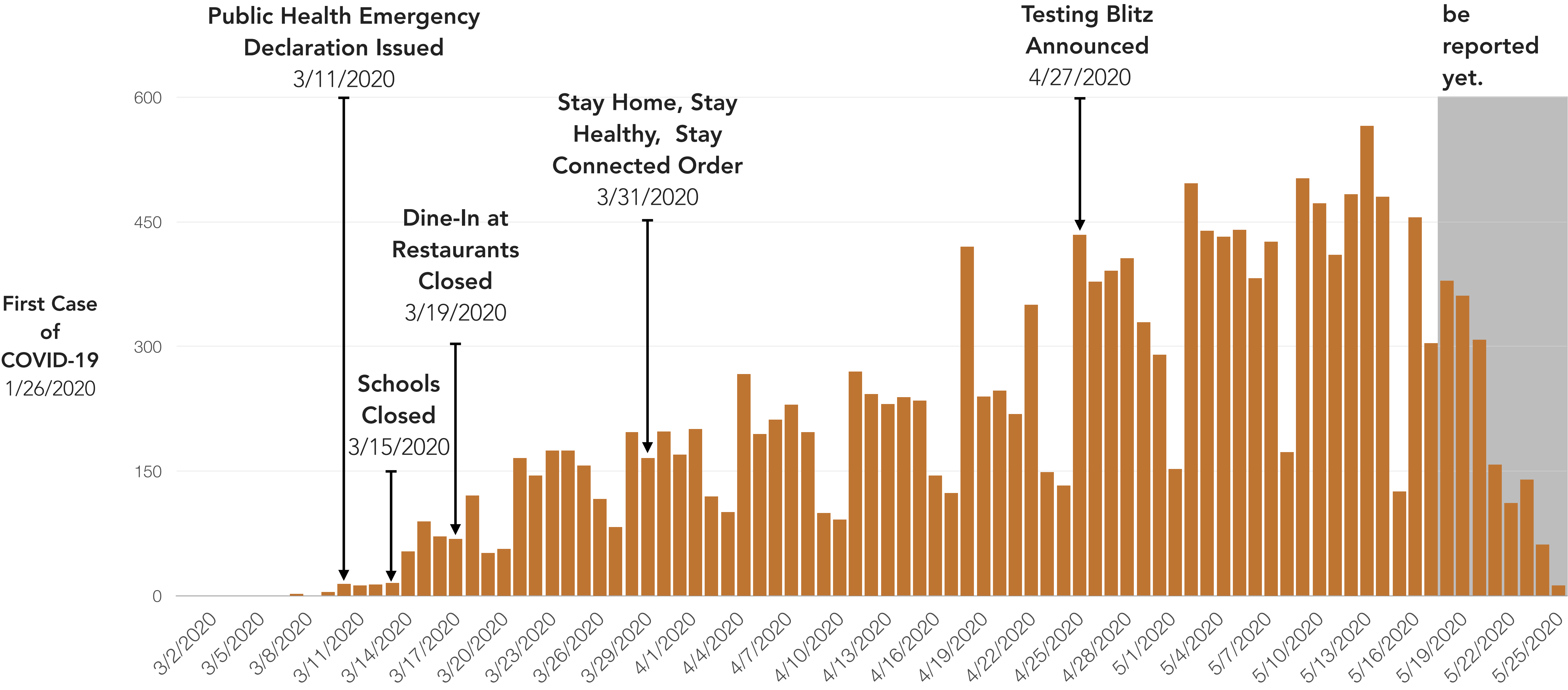
OR

Downward trajectory of positive tests as a percent of total tests within a 14-day period

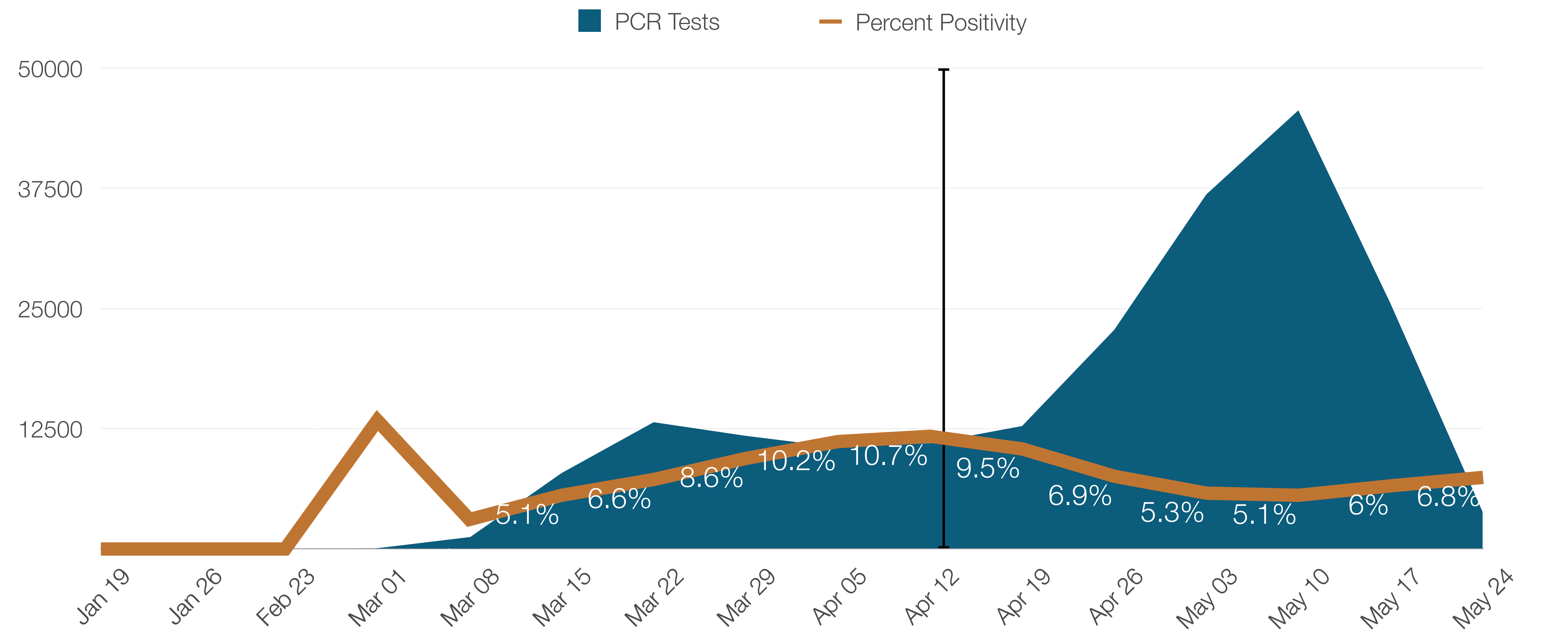


COVID-19 CASES BY DAY

Illnesses in the last 4-7 days may not be reported yet.



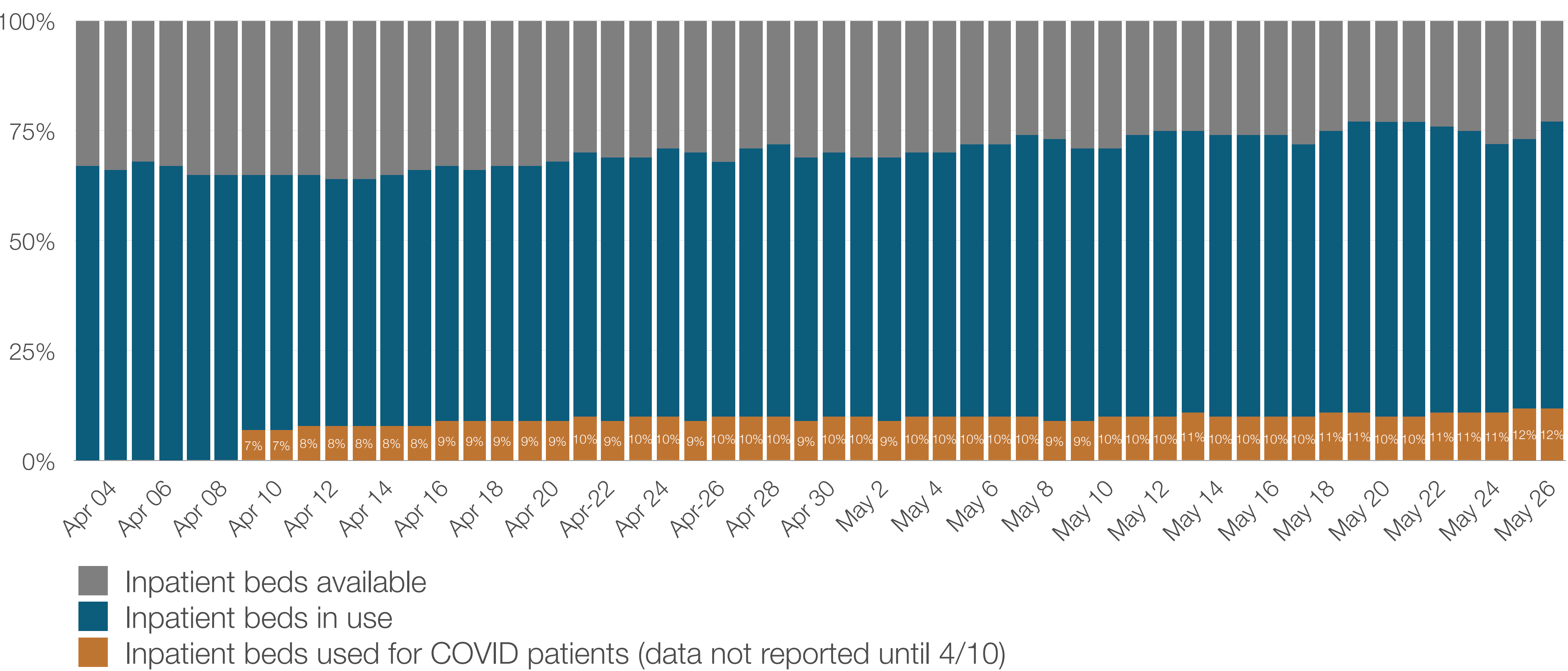
PERCENTAGE OF POSITIVE TESTS



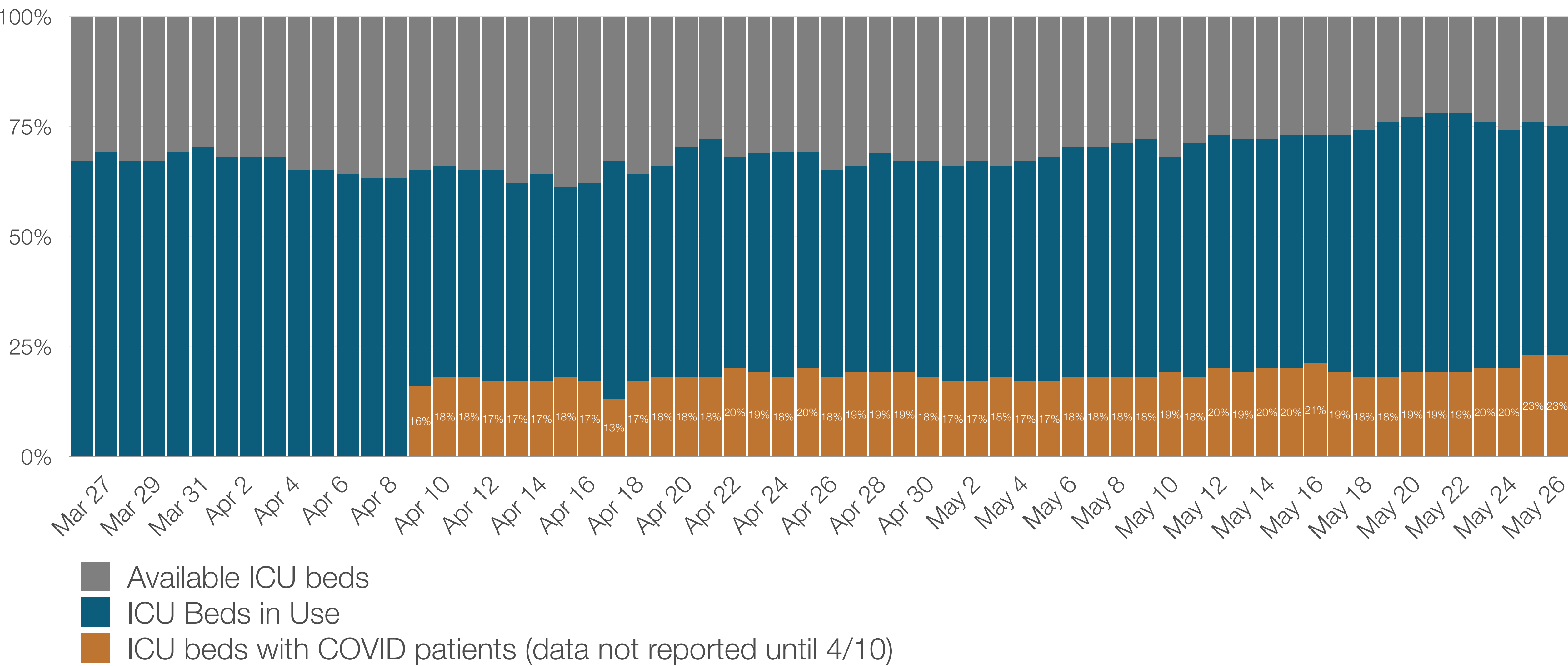
HOSPITALS →

Treat all patients without crisis care.

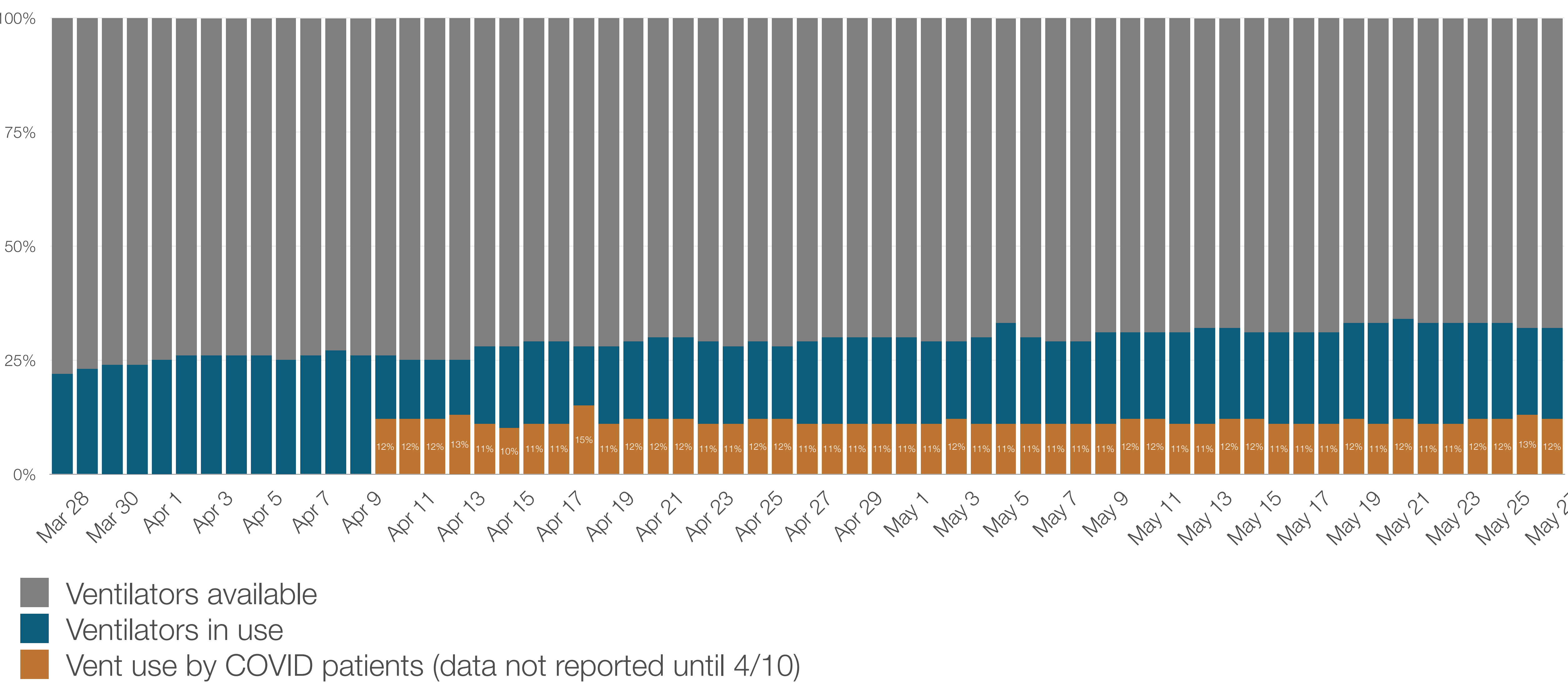
HOSPITAL BEDS



INTENSIVE CARE UNIT HOSPITAL BEDS



VENTILATORS



TESTING →

Robust testing program in place for at-risk healthcare workers, including emerging antibody testing and trace contacts of COVID-19 results.

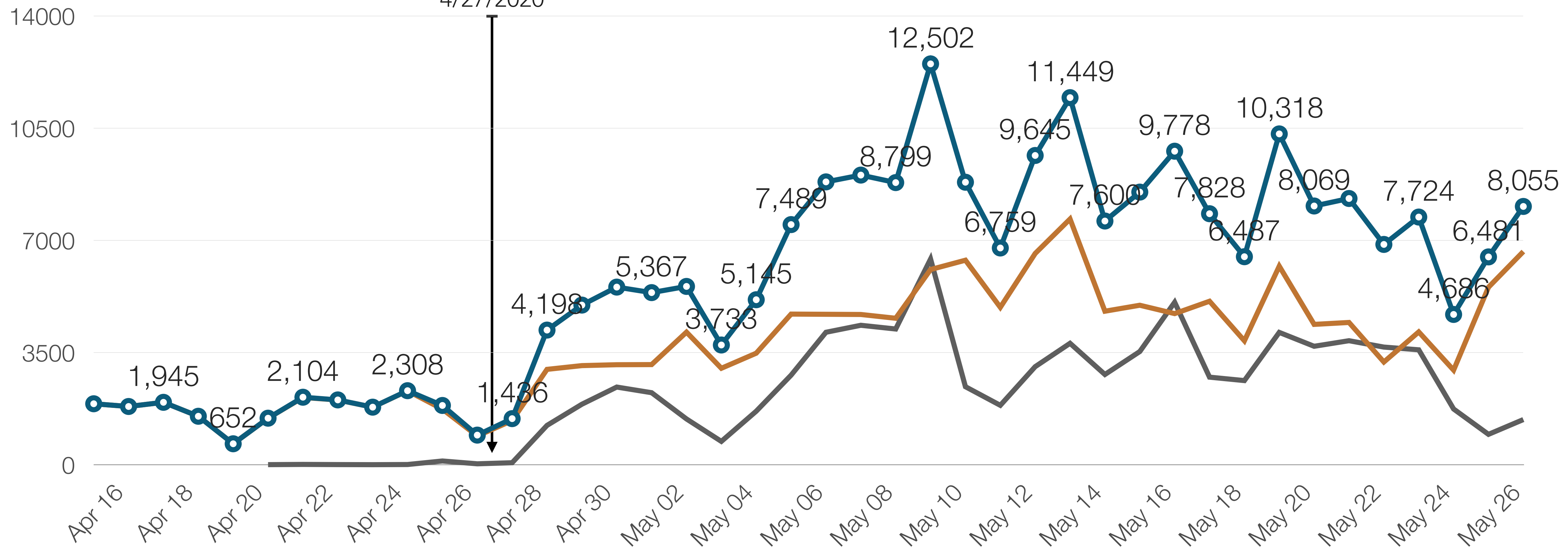
TESTING BY DAY

○ All labs
287,605

— Diagnostic (PCR)
202,914

— Antibody (Serology)
84,691

Testing Blitz Announced
4/27/2020



DR. CARA CHRIST

ARIZONA DEPARTMENT OF HEALTH SERVICES

CONTINUED PRIORITIES

AREAS WE CONTINUE TO MONITOR AND ASSIST

- Testing residents and staff in all Medicare Certified Skilled Nursing Facilities (SNF).
- Testing residents and staff in assisted living facilities.
- Serology testing for correctional officers.
- Providing Support to the Navajo Nation.
- Monitoring increasing numbers in Yuma County.

ENSURING HOSPITAL CAPACITY

ARIZONA SURGE LINE

- Over the last few weeks we've worked to implement the Arizona Surge Line, which has been identified as a best practice by the Centers for Medicare and Medicaid Services (CMS)
- The Surge Line offers free statewide 24/7 call line for hospitals and their providers that optimizes hospital resources by quickly coordinating the transfer, admission, and discharge of patients statewide
- Facilitated the transfers of over 400 patients to the appropriate level of care throughout the state

ENSURING HOSPITAL CAPACITY

GOVERNOR DUCEY ISSUES NEW EXECUTIVE ORDER

- Requires hospitals to utilize statewide centralized bed placement system that facilitates the transfer of suspected or confirmed COVID-19 patients to appropriate levels of care.
- Requires hospitals to update bed openings frequently, and requires them to accept patients when clinically appropriate and when their resources allow.
- Ensures that patients that are transferred to a hospital/facility by the Arizona Surge Line are considered in-network by their insurance provider, so they do not get charged out of network costs.

MAJOR GENERAL MICHAEL MCGUIRE

ARIZONA NATIONAL GUARD

ARIZONA DEPARTMENT OF EMERGENCY AND
MILITARY AFFAIRS

NAVAJO NATION

ONGOING SUPPORT

- Arizona National Guard deployed to Tuba City via UH-60 Blackhawk helicopter to assess the hospital and deliver PPE.
- 76 hours of UH-60 Blackhawk helicopter flying hours
- 10 hours of C-12 aircraft flying hours
- A four-aircraft flyover
- Two dedicated Blackhawk helicopters and crews on 24-hour alert for emergent medical evacuation of patients
- 10 training classes to a total of 170 members of the Navajo Nation on the proper use of PPE and PPE conservation
- Medical experts to support hospital operations and surge planning
- Two Alternate Care Sites: one in Chinle, AZ and one in Shiprock, NM, creating an additional 100-bed capacity

NAVAJO NATION

ONGOING SUPPORT

- 4 medics to support Chinle Alternate Care Site (ACS) operations
- 14 personnel for staffing at the ACS
- Testing site support and food stocking and distribution operations
- Coordinated food and water donations, and food and water distribution including
- Deployment of four potable water tanks with 5,000 gallons each to four sites for multiple weeks on the Navajo Nation
- Coordinated donation and delivery of 30,000 liter bottles of water
- Coordination to increase medical staffing for Tuba City Hospital.
- Delivered goods to Window Rock, Chinle.
- Continued testing support to Tuba City Hospital.

**10 MILLION MASKS
AND NEARLY
500,000 FACE SHIELDS**

**DISTRIBUTED TO
ARIZONA COUNTIES
FOR LONGTERM-CARE
FACILITIES AND
HOSPITALS.**



WHERE WE ARE TODAY →

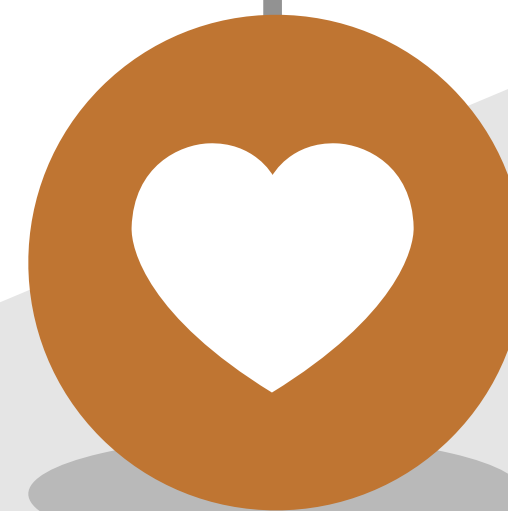
OUR PLAN: RETURNING THE ARIZONA WAY

PHASE IN RETURN BASED ON THE RECOMMENDATIONS BY THE CDC
AND HEALTH EXPERTS THROUGH MAY AND JUNE

INCREASE TESTING TO RETURN IN MAY
WHILE MAINTAINING STRONG PHYSICAL DISTANCING

BALANCE PUBLIC HEALTH & RETURNING STRONGER

GRADUAL & PHASED IN





ARIZONA TOGETHER

WITH SCHOOL LEADERS

CONTINUED PARTNERSHIP WITH SCHOOL LEADERS

- Productive meeting led in partnership with Superintendent Kathy Hoffman.
- Received input from school leaders from across the state and Schools are eager to get back to class.
- Schools are seeking clear guidance, and flexibility to tailor the guidance to meet the needs of their specific school district.

ANNOUNCEMENT

SCHOOLS TO RESUME AT THE START OF THIS SCHOOL YEAR



- We're planning ahead.
- Superintendent Hoffman will release guidance for schools on Monday, June 1st.
- This guidance was informed by school leaders, teachers, parents and public health experts from the Arizona Department of Health Services.

ANNOUNCEMENT

EXECUTIVE ORDER TO SUPPORT OUR SCHOOLS

- In our meeting, Superintendents asked for flexibility around the child care ratios for school based child care programs.
- Today, we're announcing a responsible plan developed by ADHS that protect the health of children in school based child care, while allowing for increased childcare capacity for school-aged children.
- We're going to continue working with our school leaders to ensure the needs of Arizona children are met.

ANNOUNCEMENT

ORGANIZED YOUTH ACTIVITIES



- We know how important staying active is to the physical and mental health of our children.
- Today, we're releasing guidance to allow youth sports can resume, safely and responsibly.
 - Summer leagues
 - Summer schools
 - Day Camps

RETURNING STRONGER

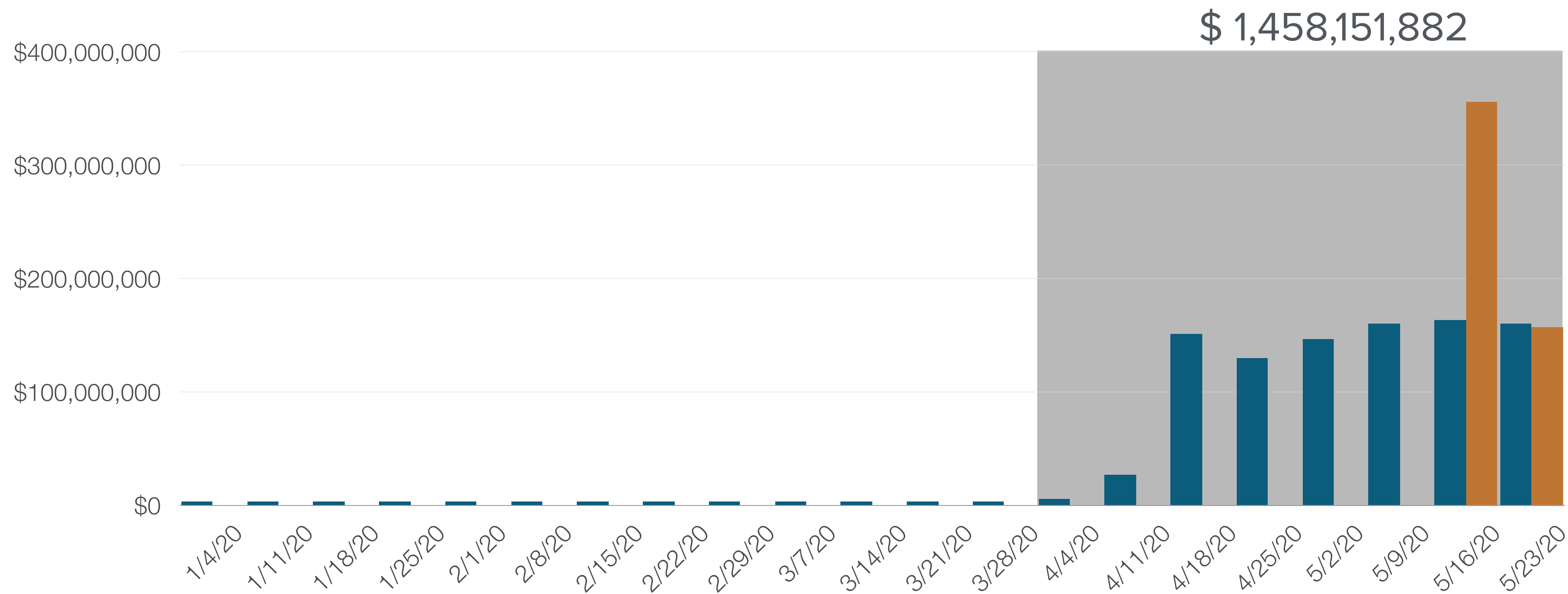
A PLAN TO REINVIGORATE
ARIZONA'S ECONOMY

UNEMPLOYMENT BENEFITS PAID

Total Paid in 2020: \$1,496,260,314

■ Unemployment Benefits
\$983,207,032

■ Pandemic Unemployment Assistance
\$513,053,282



DEPARTMENT OF ECONOMIC SECURITY

- We continue to make progress beyond. This week alone we've paid out additional dollars:
 - \$188M Unemployment Insurance Benefits
 - \$218M in Pandemic Unemployment Assistance
- In total, DES has served over 710,000 Arizonans:
 - 572,170 Unemployment Insurance Benefit Initial Claims
 - 139,394 Pandemic Unemployment Assistance Initial Claims

DEPARTMENT OF ECONOMIC SECURITY

- New Director Announced
 - Michael Wisehart
 - Career Public Servant
 - 20 Year Veteran of DES
 - Instrumental in the creation of the Arizona Department of Child Safety, Arizona's Second Chance Centers, Enrichment Centers for Childcare For Essential Workers
- Tom Betlach
 - Arizona appreciates Director Betlach's service, returning from retirement when the state needed him most.
 - Tom is committed to continuing to provide assistance to Director Wisehart through the transition.

ARIZONA TOGETHER

WITH LOCAL COMMUNITIES

RESOURCES FOR LOCAL COMMUNITIES

\$441 MILLION

**FOR ARIZONA COUNTIES,
CITIES, & TOWNS**

DIRECT PAYMENTS
MAXIMIZED FLEXIBILITY
MINIMIZED RED TAPE

\$150 MILLION

EXPRESS PAY RESOURCES

FAST-TRACKED FEMA
REIMBURSEMENTS FOR
CORONAVIRUS RELATED
EXPENDITURES

A dark blue-tinted background image of the Arizona State Capitol building. The central focus is the large dome topped with the Arizona Pioneer statue. Below the dome is the triangular pediment, which is filled with intricate carvings of various symbols, including a sun, a star, and several circular medallions. The building's facade is visible on either side of the pediment.

ARIZONA TOGETHER

STAY **HEALTHY** | RETURN **SMARTER** | RETURN **STRONGER**